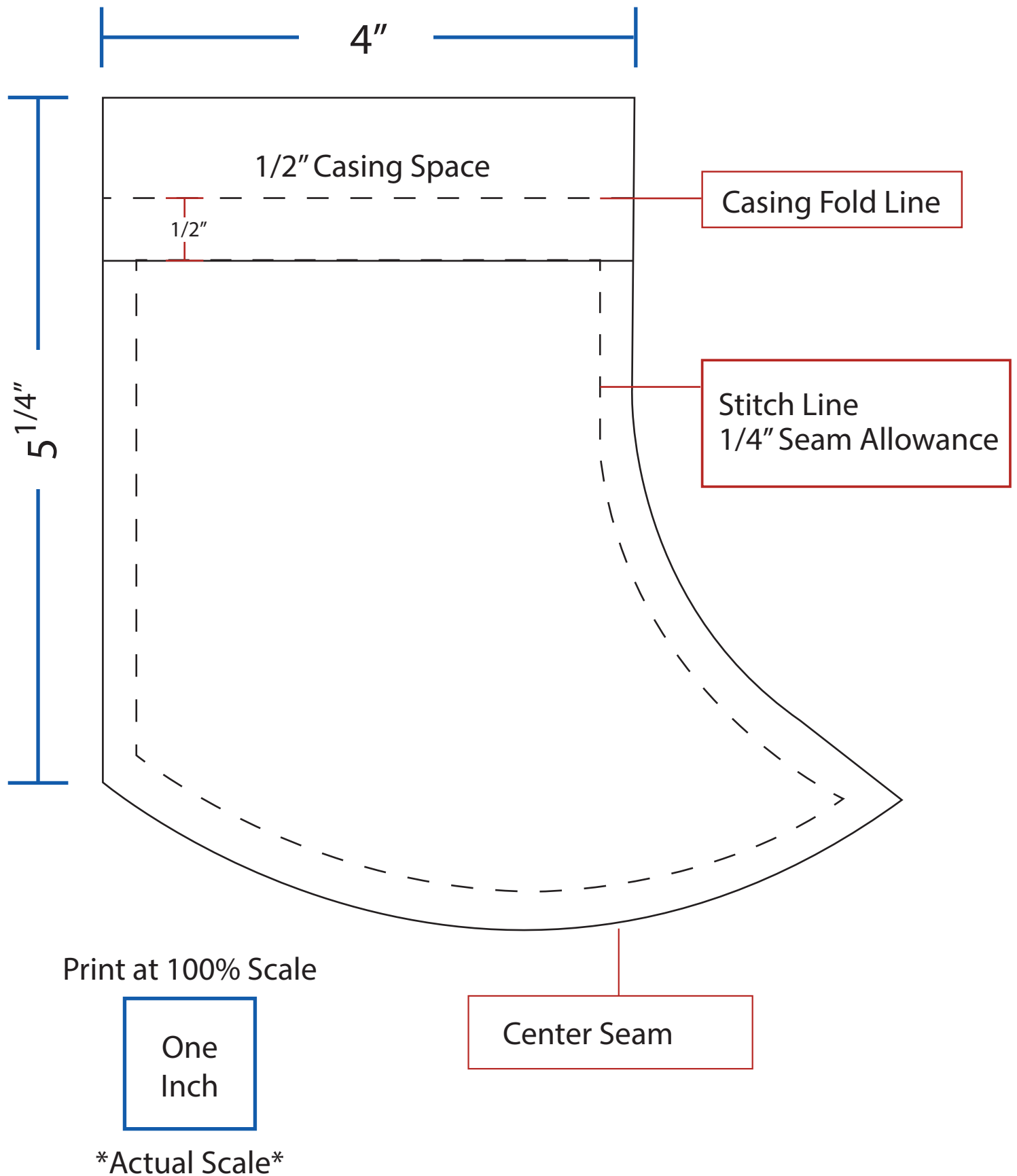


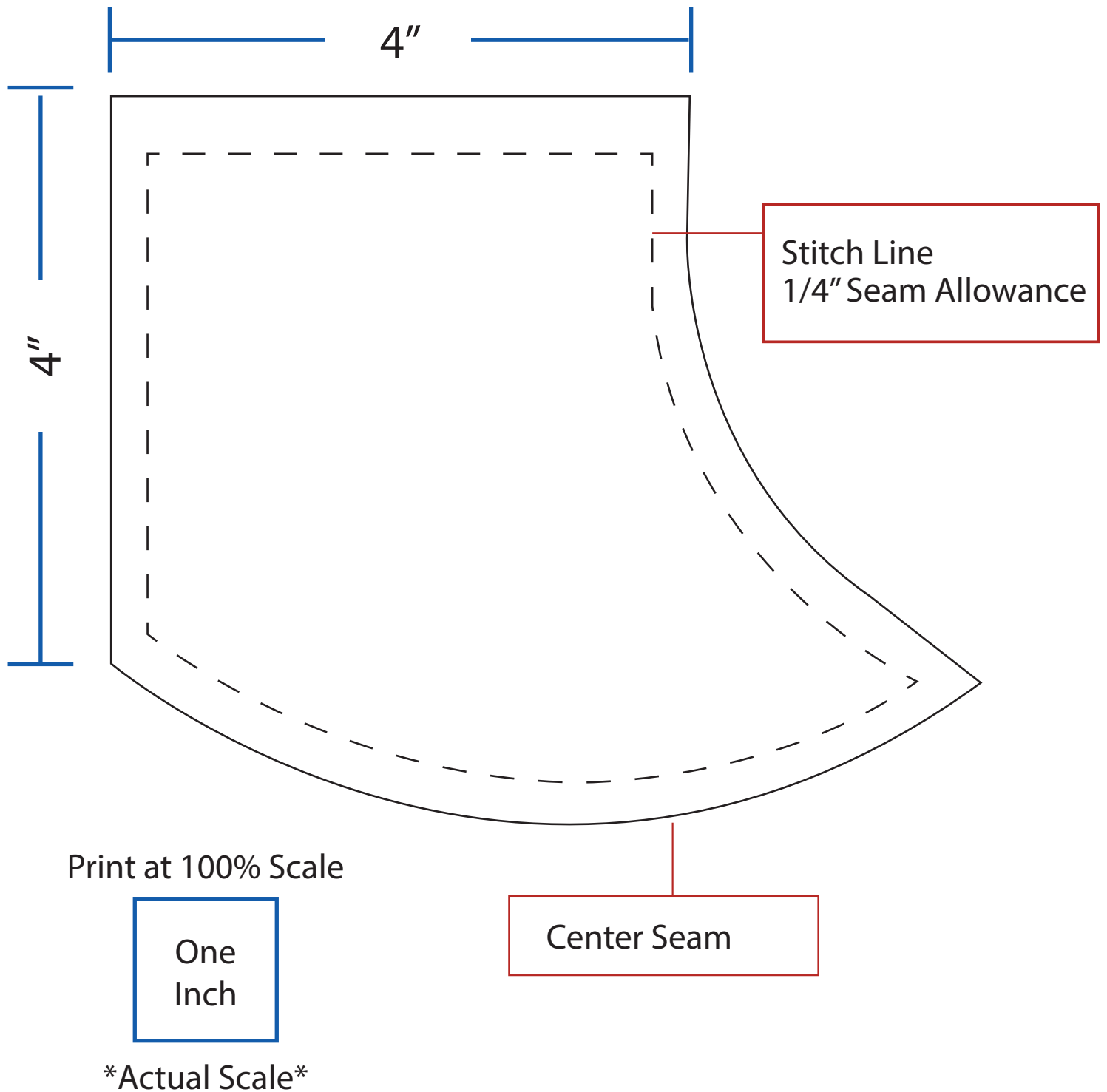
Fitted Face Mask Template

brother
at your side



Fitted Face Mask Filter Holder Template

brother
at your side



DIY FITTED FACE MASK TUTORIAL

Download Printable Template



MATERIALS NEEDED



- All-Purpose Thread
- Scissors
- Half a yard cotton fabric
- Pins
- Iron on Interfacing
- Two 10 Inch $\frac{1}{4}$ elastic straps
(Or two hair ties will work)
- Printed Instructions from
Brother Creative Center
- Optional filter for pocket holder

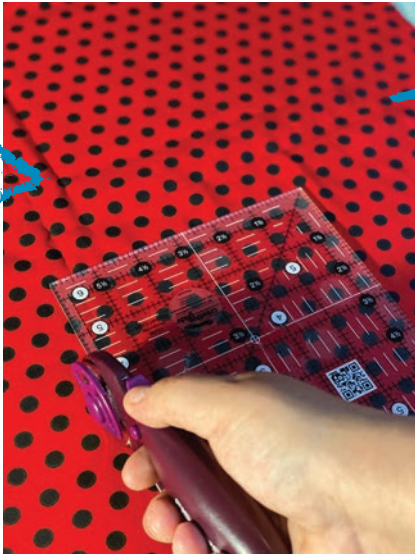
STEP 1: Print out face mask template

- Print mask template at 100% percent scale
- Cut out printed template for
mask & filter holder



STEP 2:

- Cut out a cotton fabric square & iron on Interfacing size 14" x 7"



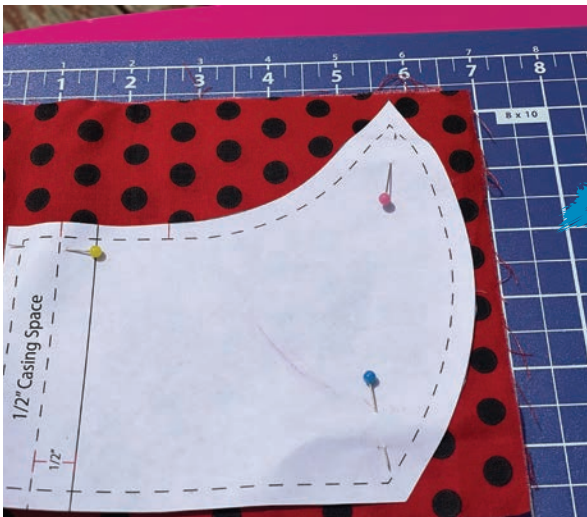
STEP 3:

- Fold fabric & interfacing strip in half



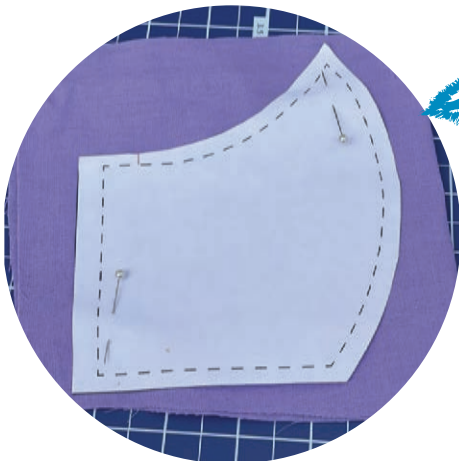
STEP 4:

- Pin template to folded fabric & iron on interfacing cut left and right sides



STEP 5:

- Cut out cotton fabric & iron on interfacing



STEP 6:

- Repeat steps 2 to 5 using the filter holder template



STEP 7:

Cut out pieces: 6 total

- 2 X Cut out printed fabric for left and right sides
- 2 X Cut out iron on interfacing sheets for left and right sides
- 2 X Cut out solid fabric for the filter holder

STEP 8:

- Overlay interfacing shiny side down to adhere to the printed fabric
- Iron interfacing on to printed fabric



STEP 9:

- Align the left & right sides together (the printed fabric will be facing the inside)
- Pin both left & right sides together
- Sew left & right sides of the mask together with $\frac{1}{4}$ seam allowance
- Stitch along the center seam for Steps 9 & 10

STEP 10:

- Sew left & right sides of the filter holder together with $\frac{1}{4}$ seam allowance



STEP 11:

- Now, let's finish the edges of the filter holder
- Fold the edges in $\frac{1}{2}$ " twice and stitch
- Finish both left & right edges

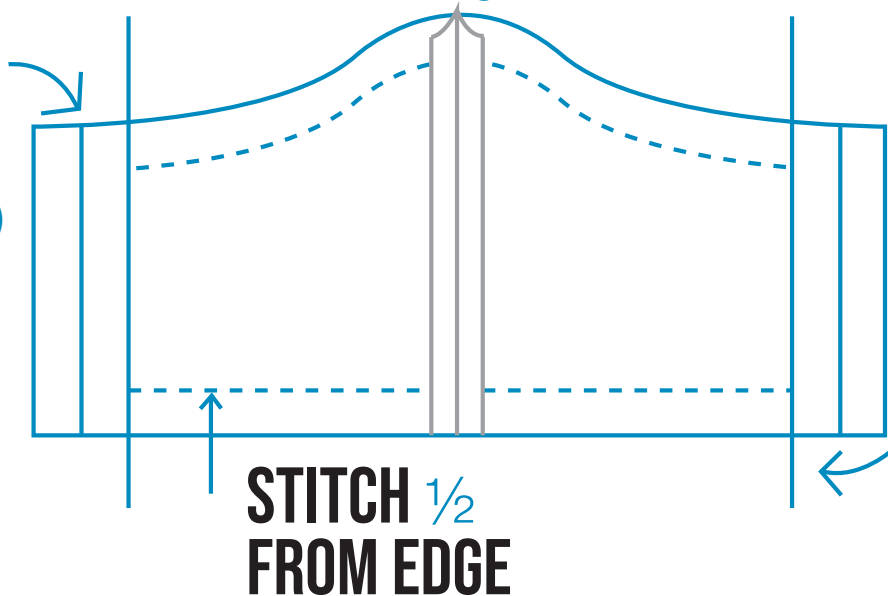


CENTER SEAM

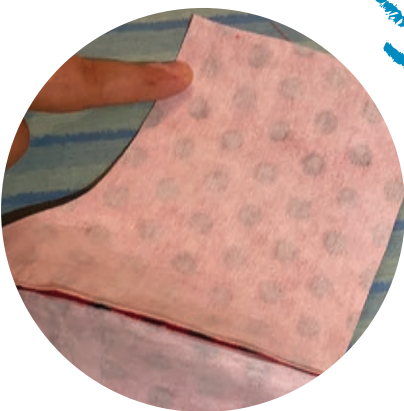
Facing out

$\frac{1}{2}$ CASING SPACE

(Do not stitch)



STEP 12:



Fold edge in $\frac{1}{2}$ "



Fold in edge again $\frac{1}{2}$ "



Iron for a clean finish



STEP 13:

- Align (seam facing outward to join) overlap and pin the filter holder together with the printed fabric
- Sew along the perimeter of the edge where the stitch line is indicated
- Leave 1" at the edge for casing

STEP 14:

- Finish edges sew casing space $\frac{1}{2}$ " from the edge

STEP 15:

- From the slit turn right side out
- Insert a 10" elastic strap Through the casing space



STEP 16:

- Overlap elastic strap 1" and sew together with a zig zag stitch (Stitch twice for extra support)
- Note: If elastic is not available you can substitute with two hair ties



**ENJOY YOUR
FITTED FACE MASK!**



* It is important to note that cloth face masks have not been proven to provide effective protection against the spread of viruses.