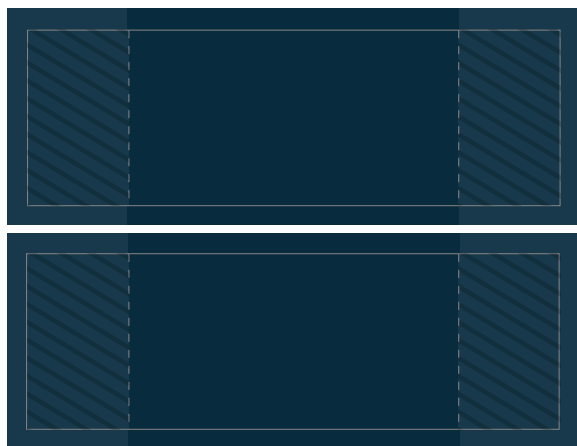
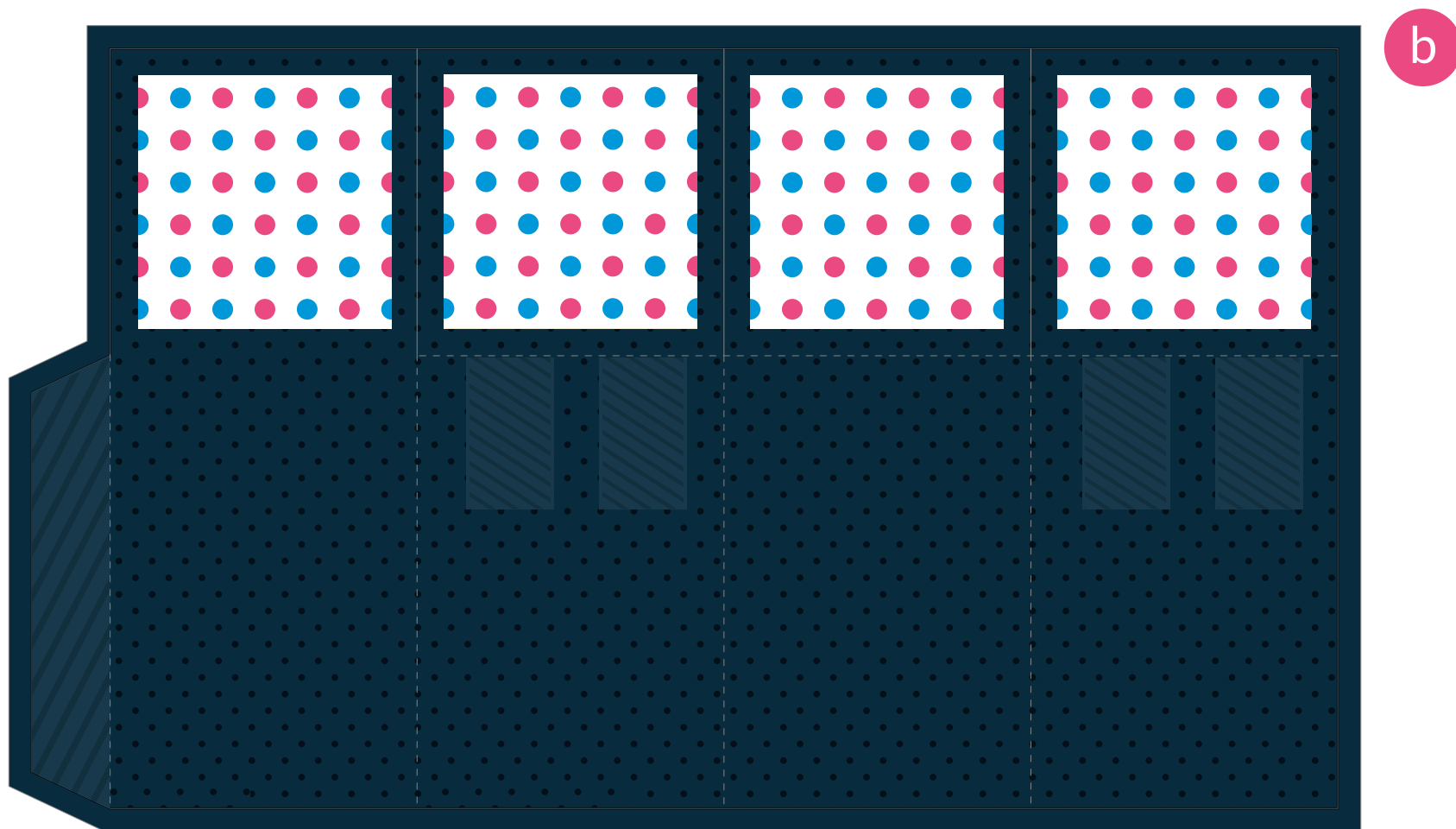


**BROTHER  
CREATIVECENTER**

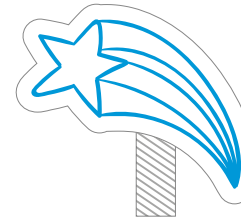
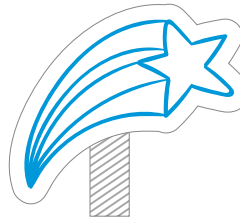
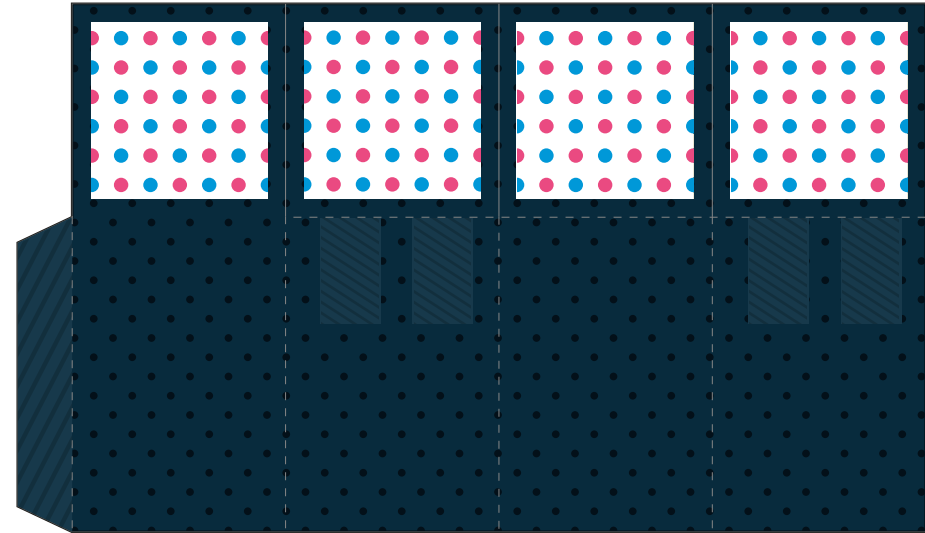
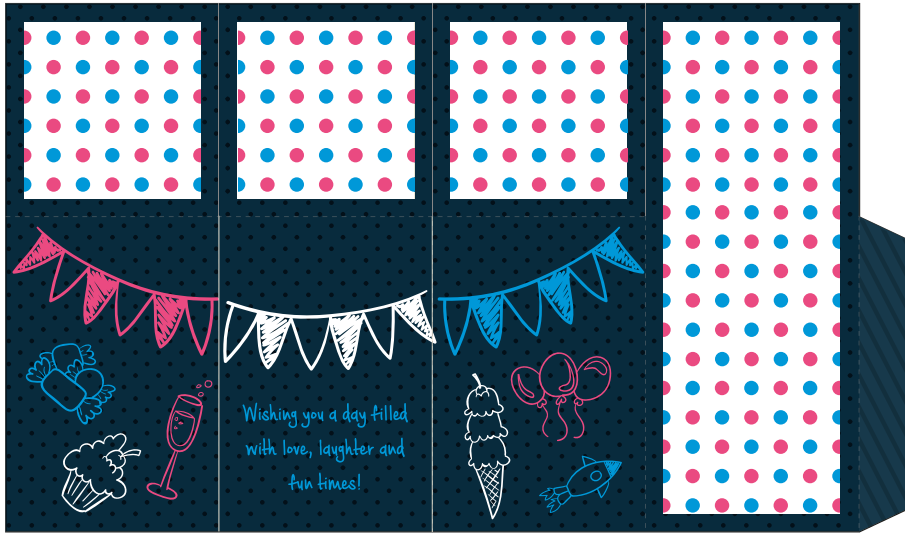


f

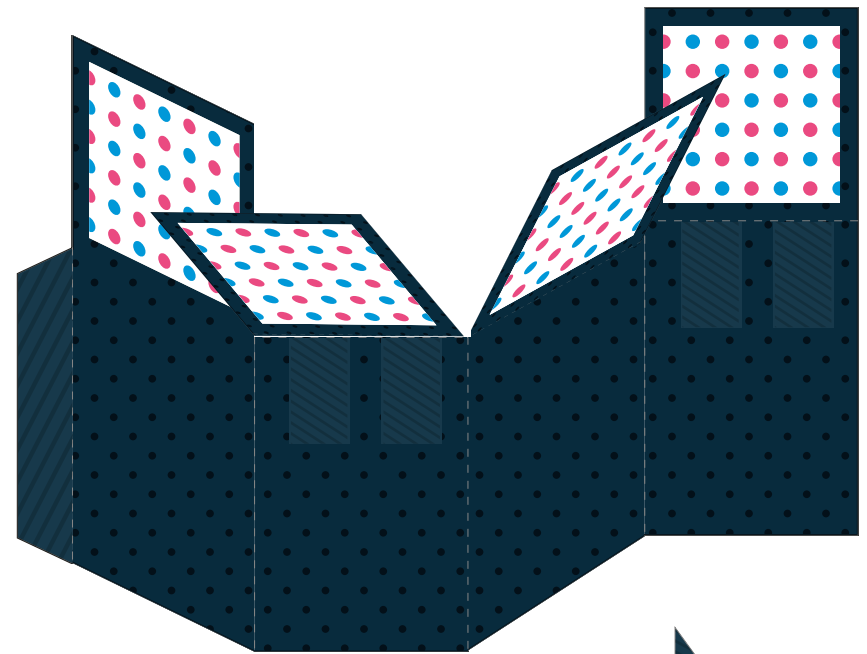
g

1. Cut along the grey solid lines for design (a), (b) and (c).
2. Fold along the grey dotted lines for design (a), (b), (f) and (g)
3. Put (a) and (b) side by side and glue the back part of the design together.
4. Glue the area indicated on (c), (d) and (e) and paste onto (f) and (g).
5. Glue the area indicated on (f) and (g) and paste it onto (b), and glue the flap to enclose the box.
6. You are done!

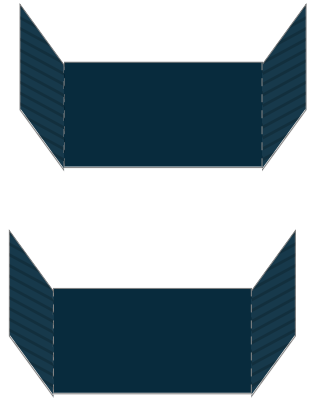
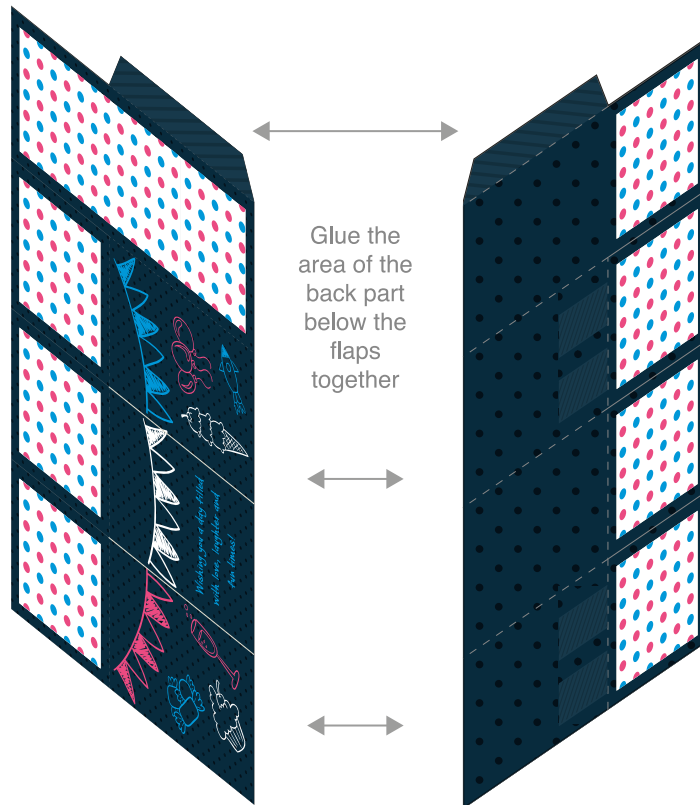
1.



2.



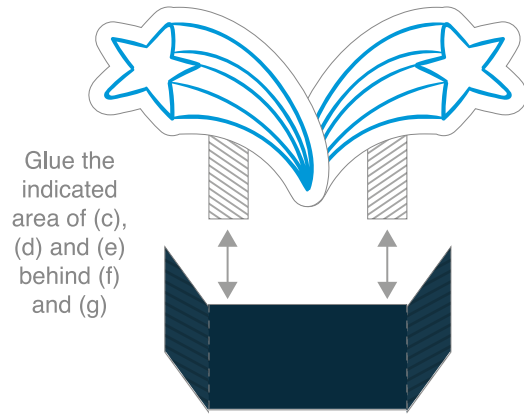
3.



**BROTHER  
CREATIVECENTER**

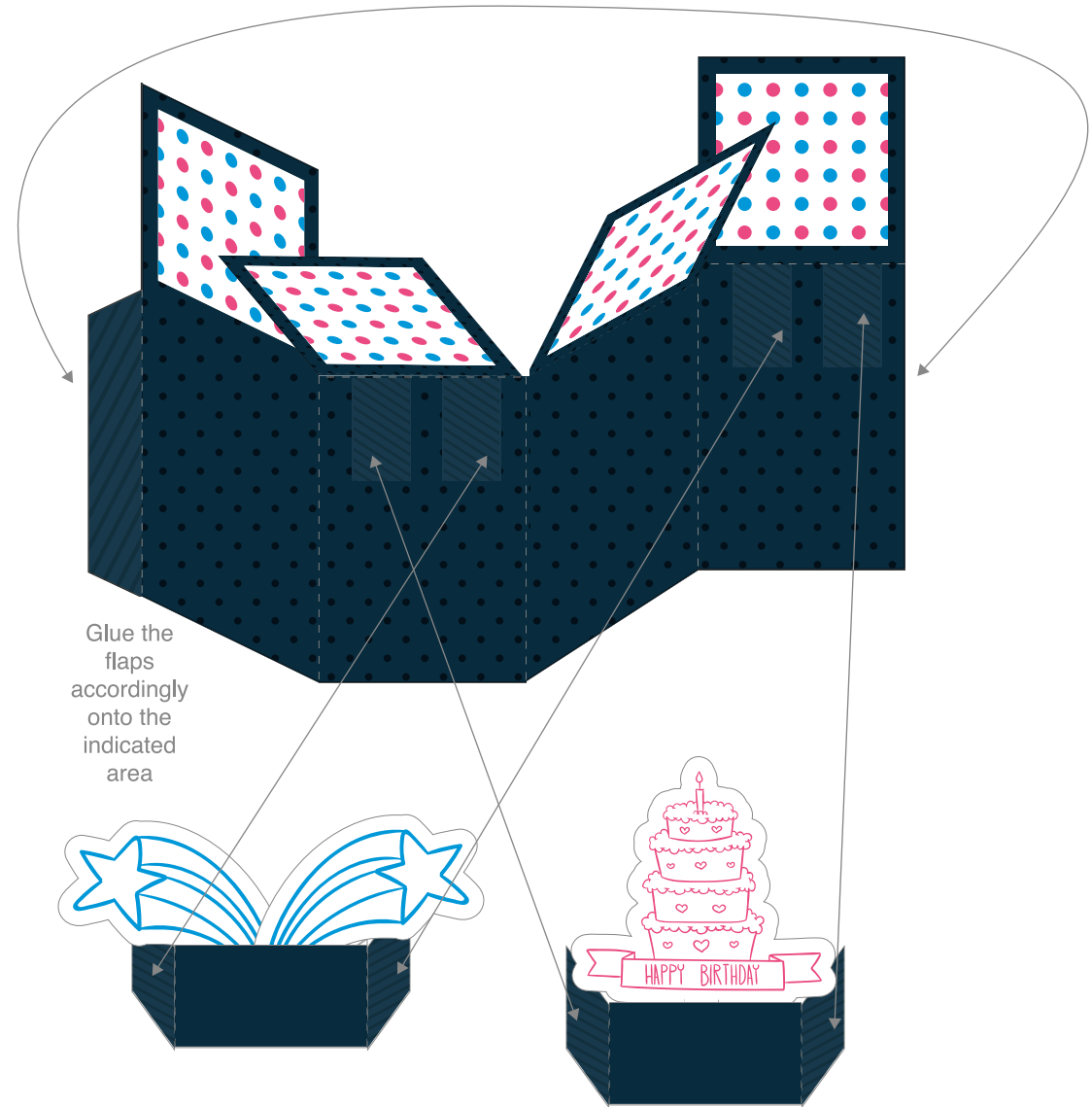


4.



Glue the indicated area of (c), (d) and (e) behind (f) and (g)

5.



Glue the flaps accordingly onto the indicated area



**BROTHER  
CREATIVECENTER**

